

# Community Forum Guests



**2011**

Dr. Cathy Grace  
MS State Early Childhood Institute  
Dr. Tom Burnham  
State Superintendent of Education



**2013**

Dr. Johnny Allen  
NEMCC President  
Dr. O. Wayne Gann, Chairman  
MS Board of Education



**2014**

Sean Suggs, Vice President / Secretary  
Toyota Motor Manufacturing, MS



**2015**

Brent Christensen, Executive Director  
Mississippi Development Authority

**2016**



## Community Forum



Sponsored by **C.A.R.E.** a Community Foundation Affiliate of CREATE

## Forum Agenda

- 11:30 Eat & Greet
- 11:50 Welcome – Dr. Lee Childress, Commission Chairman  
Pledge  
Chuck Counce, Kiwanis; Beth Hudson, Rotary; Trish Parks, Civitans  
Prayer – Ronnie Sleeper, Commission Steering Committee  
Introduce Video & Recognize Guests – Dr. Lee Childress
- 12:00 Progress Report Video
- 12:20 Introduction of Keynote Speaker  
Gary Chandler, President/COO Corinth Alliance
- 12:25 Keynote  
Glenn McCullough, Executive Director MDA
- 12:45 – 12:55 Q&A
- 12:55 Closing – Amy Craven, Commission Executive Director
- 1:00 Adjourn

## Workforce Development

Ronnie Sleeper, Chair, Med-Supply Plus

### Primary Goal:

Promote the utilization of the work force training and educational opportunities available in the area.

### Strategies:

- Develop and grow a collaborative network of providers.
- Survey industries annually to determine training needs.
- Modify programs to address industry needs to the extent possible.
- Direct Corinth and Alcorn County citizens to the Northeast Mississippi Community College development programs.
- Discuss career readiness issues with students in the schools.



### Activities to Date:

- The Clifford Worsham Water Treatment system is designed to serve not only Corinth, but our entire region. With an excess water capacity of over 4 million gallons per day, we are well positioned for the future water needs of our region.
- Corinth Sewer Department in recent years has initiated a few projects including the completion of the \$24 million wastewater treatment facility renovation raising capacity to eight million gallons per day. Other recent improvements include the \$3.5 million sewer collection system rehabilitation and repair project.
- A few drainage projects that are in the works or have been completed include the \$4.1 million EDA grant that addresses stormwater runoff in the eastern and western basins, the South Corinth arch pipe project and the recent drainage pipe replacement project on Shiloh Road.
- Site improvements to the 140 acre RailHub-South site continue to take shape. A recent \$225,000 tree clearing and grubbing project was just completed with a more robust \$500,000 project to commence this summer.
- Broadband infrastructure remains a focus of our task force. The existing Corinth/South Alcorn Industrial Park was designated as AT&T Fiber Ready. The RailHub park is presently being considered for the designation as well.
- Regarding beautification, the Welcome to Corinth gateway signs will be restored with new energy efficient lighting and landscaping. In addition, aesthetic enhancement solutions are in the early stages of being explored for the Harper Road roundabout.



Glenn L. McCullough, Jr.  
Executive Director, MDA  
gmccullough@mississippi.org

Glenn McCullough is a former chairman of the Tennessee Valley Authority. During his tenure with TVA, the utility earned national recognition for its economic development efforts and launched its megasite program. Toyota Motor Manufacturing Mississippi, Mississippi's second original equipment manufacturer in the automobile industry, is located on a TVA megasite.

From 1993 to 1997, McCullough served as executive director of the Appalachian Regional Commission. The ARC is a federal-state partnership that focuses on economic development in 13 states.

McCullough was elected mayor of Tupelo, Miss., in 1997 and served until his appointment to TVA. During McCullough's service as mayor, Tupelo was named an All-America City by the National Civic League. Under McCullough's leadership, the city launched the 50-acre Fairpark District, which includes major revitalizations, community amenities and business locations.

In May 2105, Gov. Phil Bryant appointed McCullough as the executive director of Mississippi Development Authority. In this position, he oversees approximately 300 MDA employees who provide support for communities, businesses, industries and leaders to help them reach their goals in Mississippi.

McCullough holds a bachelor's degree in agricultural economics from Mississippi State University. He and his wife Laura have two sons and two granddaughters.

## Mission Statement

To enhance the quality of life for all Alcorn County citizens by assessing and addressing the current and future needs and opportunities through: - Collaboratively developing high-impact strategies and solutions; and - Continually measuring the success of the efforts.

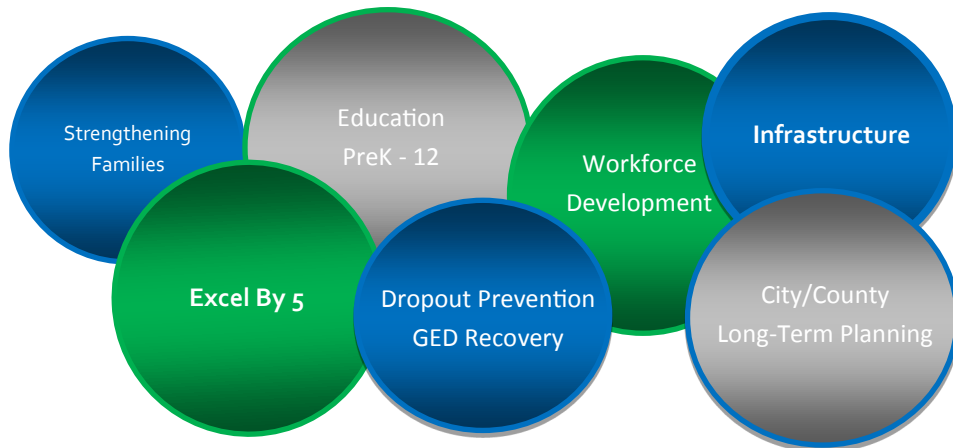
## Primary Goal

To create a community culture that promotes infrastructure development, educational enhancements and strong community values in an ongoing effort to increase the quality of life for all Alcorn County citizens.

## Steering Committee

Ben Albarracin	Yvonne Fair	Orma Smith
Bobby Capps	Mona Lisa Grady	Danny Turner
Terry Cartwright	Allison Hall	Joe Vann
Gary Chandler	Larry Mitchell	Ann Walker
Lee Childress	Chris Porterfield	Greg Williams
David Dixon	Ronnie Sleeper	Sandy Williams

## Task Forces



CFAC • PO Box 239 • Corinth, MS 38835  
Amy Craven, Executive Director  
alcorncommission@comcast.net  
www.CAREforCorinth.com

## City-County Long-Term Planning

Joe Vann, Chair, Retired, former City Alderman

### Primary Goal(s):

1. Enhance city and county collaboration through strategic planning.
2. Address common services that can be consolidated for resource and efficiency gains.

### Strategies:

1. Develop a strategic plan based on recommendations made by the Stennis Institute which focuses on one to four years at a time.
2. The strategic plans will be coordinated to include Community Planning/Development department and board, The Alliance, Board of Aldermen, Board of Supervisors, MEC, CARE, etc.

## Infrastructure

Gary Chandler, Co-Chair, The Alliance  
Ben Albarracin, Co-Chair, City Alderman

### Primary Goal:

Properly functioning and sound infrastructure will be a key differentiator in the communities that thrive and grow in the twenty-first century and those that do not. Our elected officials and public utilities are the catalyst for creating action plans that position our community to succeed in the years to come. Improving infrastructure is without a doubt a complete team effort. I am proud to report our community is taking the necessary steps to address these critical infrastructure units.

## Education

Lee Childress, Corinth School District Superintendent

Larry Mitchell, Alcorn County School District Superintendent

### **K-12 Primary Goal:**

1. To assist the Alcorn and Corinth Schools in developing world-class 21st century American educational systems where all students and adults receive a high quality education aimed at meeting the needs of Alcorn County in a global, knowledge-based economy.
2. To increase the educational opportunities for all Alcorn County citizens.
3. To increase the competitiveness of Alcorn County and Corinth Schools to reach international standards.

### **K-12 Strategies:**

1. Explore opportunities to increase communication between schools and their stakeholders.
2. Explore and implement improvements in the areas of instruction, curriculum, assessment and accountability.
3. Explore the redesign of education to prepare a 21st Century workforce in Alcorn County.
4. Create a culture in Alcorn County that understands the value of education.

### **Drop Out Prevention Primary Goal:**

Improve countywide graduation rate by 10 % over the next 5 years.

### **Drop Out Prevention Strategies:**

1. Enlist community members to partner with local school districts in dropout prevention practices, namely mentoring.
2. Promote and enlist partnerships in existing mentoring programs in the community (Boys and Girls Club, Lighthouse, Project Attention, etc.)
3. Discover gaps in services and address same.

## Excel By 5

Allison Hall & Yvonne Shumpert-Fair, Certification Managers

### **Primary Goal:**

As of June 2014, Corinth-Alcorn County became a certified Excel By 5 community. The certification process ensures that all children in our community ages 0-5 are healthier and adequately prepared for kindergarten by developing new programs and collaboratively working with existing programs to strengthen, support and empower each unique child while emphasizing the important roles parents and early childhood educators play in the lives of children. The Corinth-Alcorn County Excel By 5 Coalition will continue to solidify the programs initiated during the certification process and expand to reach more children and families in our community.

### **Strategies:**

1. Community Involvement is a vital asset in the life of a child in his community. This team plays a key role in assuring that community leaders, educators, businesses, health care providers, and other concerned citizens work together to meet the needs of families in our area. They have created a community resource guide that is distributed to families that gives them contact information to resources that are available to them and their children. They also recruit and train volunteers that are utilized at all Excel by 5 events.
2. Family and Parent Support provides parenting resources and workshops to equip families with the knowledge they need to begin teaching their child from birth. Newborn bags are distributed to every mom who delivers a baby at MRHC with parent materials that emphasize the importance of healthy brain development and also includes a book and toy for parents to begin engaging with their child at birth. They continue to provide education opportunities and materials at community events such as Winter Wonderland and the Christmas Parade.

3. Early Care and Education team works closely with area childcare centers and caregivers to provide multiple opportunities for quality early childhood training and continuing education units. They also provide a School Readiness workshop for parents at the Community Wide Easter Egg Hunt.

4. Health and Safety team has a focus of identifying and addressing children's health issues in the community and assists in providing intervention services such as well-baby care and health screenings. Their third annual Health Fair that was held in September drew nearly 150 families with the majority of the children being in our target age range of 0-5.



## **Strengthening Families**

Bobby Capps, Co-Chair, Crosswind Ministries

Mona Lisa Grady, Co-Chair, C.A.R.E. Community Foundation

### **Primary Goal:**

To collaboratively work with existing programs to strengthen, support and empower each unique family.

### **Strategies:**

To report current opportunities in various segments of the community for strengthening families with the goal of increasing the number of active volunteers.

**Boys & Girls Club** • 511 Clark Street • Director Antoine Walker • 286-2808

**Crosswind Ministries** • 703 Tate Street • Director Bobby Capps • 287-5600

**Easom Foundation** • 700 Crater St • Chairman Sam Crayton • 404-386-3359

**Lighthouse Foundation** • 1103 John St • Director Gary Caveness • 286-0091

**Living Free Ministries** • 2024 Hwy 72 • Director Tommy Wilson • 287-2733

**Living Healthy Clinic** • 2601 Getwell Rd • Dr Tommy Sweat • 662-872-3025

**Oasis Medical Center** • 2421 Proper St • Director Martha Jobe • 287-8001

**Pine Vale Children's Home** • 1872 CR 700 • Tommy Baragona • 286-6555

**Project Attention** • 1101A John St • Director Shirley Rolland • 287-5200

**S.A.F.E.** • National Hotline Women's Abuse Center • 800-527-7233

**WIN Job Center** • 2759 S Harper Rd • Director Jason Mattox • 286-3308